

---

# Transfer Tag Team

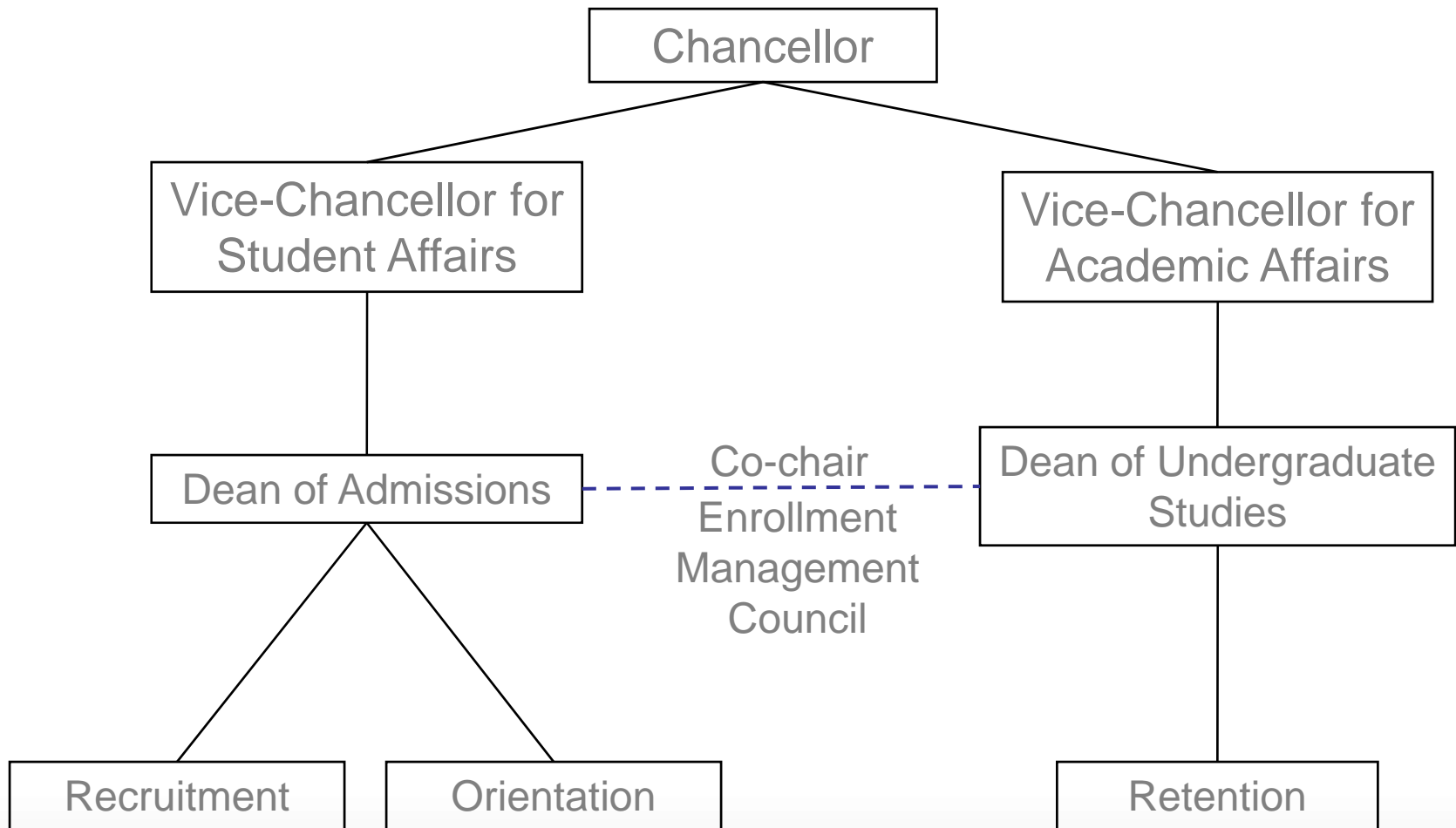
Collaborating to eliminate gaps in  
service for transfer students at  
University of Nebraska-Lincoln

# Transfer Tag Team

---

- Cindy Cammack, M.A.
  - Recruitment
  - Student Affairs--Admissions
- Patrick McBride, M.S.
  - Enrollment & Orientation
  - Student Affairs--Admissions
- JoAnn Moseman, M.A.
  - Retention
  - Academic Affairs--Undergraduate Studies

# Reporting Structure



# University of Nebraska-Lincoln

---

- Nebraska's Flagship University
  - Fall 2007 – 857 transfers – 4215 freshman
  - Spring 2008 – 427 transfers – 45 freshman
- Over 25% of new enrollees each AY are transfer students
- Increasing Spring transfer enrollment
- Half transfer from Nebraska Community Colleges

# Transfer Student Recruitment

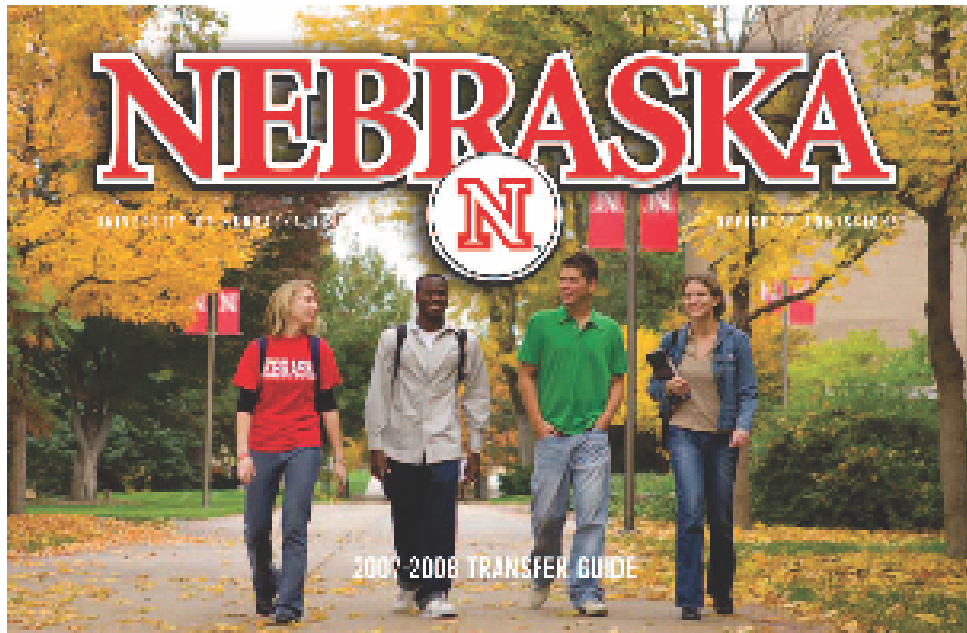
---

- Communication Plan
- Campus Visit Options
- Scholarships
- Public Relations and Outreach

# Communication


---

- 1 Print Publication “Transfer to Nebraska”



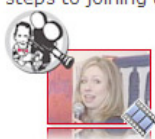
# Communication

## NEBRASKA

OFFICE OF ADMISSIONS 

Seth:

Please call or email me to ask any questions about taking your next steps to joining us at the University of Nebraska-Lincoln.



See whose presidential campaigns visited campus recently:


<http://admissions.unl.edu/landingpad/links.asp?linkID=391>

And be sure to watch the "Valentine" Real Nebraska posted this week.

<http://admissions.unl.edu/landingpad/links.asp?linkID=392>

[Please fill out our expanded web form](#) so we can share news about exciting events on campus related to your interests.

Take care,



Cindy Cammack  
1-800-742-8800, ext. 5153  
[cindycammack.admissions@unl.edu](mailto:cindycammack.admissions@unl.edu)

*Campus News*

**YouTube: HUSKER VIDEO OF THE MONTH**

Meet your Husker football coaches...  
<http://www.youtube.com/watch?v=mOrT8QG2A8M>

**UNDECLARED? YOU'RE IN THE RIGHT PLACE**

Your Admissions Counselor



Cindy Cammack

❖ Admissions Links

- [Apply](#)
- [Visit](#)
- [Diversity](#)
- [Campus Life](#)
- [Cost & Aid](#)
- [Calendar](#)
- [Real Nebraska](#)

## Customized E-mail Newsletter

# Web Resources

---

- On-line application
- Transfer Course Equivalencies
- Transfer Policies
- Nebraska Community College Transfer Guide
- College Advising Contacts
- AP/IB/CLEP & Military credit

# Campus Visit Options

---

- Transfer/Tuesday Thursday
  - Transfer session
  - Tour with transfer guide
  - Academic appointment
- Regular Campus Visit
  - General session
  - Campus tour
  - Academic appointment

# How To Transfer Day

---

10:00 AM - Check-In

10:30 - AM - Welcome - How to Transfer to Nebraska

11:15 AM - Lunch

Noon - Student Panel -meet current UNL students who transferred to Nebraska

12:30 PM - Special Interest Session (Select 1)

- Career Services
- Housing Options

1:00 PM - Special Interest Session (Select 1)

- Making the Transition - How to Get Connected
- Scholarships & Financial Aid

1:30 PM - Academic Programs and Facility Tour

3:00 PM - Academic Appointments

3:45 PM - Wrap up and program evaluations

# Scholarships

---

- Nebraska Residents
  - Application for Admission
  - One page personal statement
  - Committee Selection
- Out-of-State Students
  - 3.0 or higher with 28 semester credits
  - Part or all of difference between in- and out-of-state tuition

# Public Relations and Outreach

---

- Transfer Fairs coordinated by NACRAO
  - all Nebraska plus IWCC and WIT
- Special Program at largest Feeder school
  - UNL Transfer Day
- Annual State Articulation Conference
- Annual Mailings to CC advisers
- Monthly E-mail Newsletter to CC advisers

# New Student Enrollment

---

Orientation  
Advising  
Registration  
Services

Moving Student From Recruitment to Transfer  
(The Tag Team Handoff)

# Time Frames for Programs

---

- June/August Matriculations
  - **3 Exclusively Transfer March, April, May**
  - 24 Programs for all New Students
- January Matriculations
  - **1 Exclusively Transfer in October**
  - 3 Programs
- Early Program has priority registration
- All other programs enroll after current students

# Preparing for Transfer Students

---

- Hire at least one transfer student as part of the orientation leader team
- Read the section “Orienting Transfer Students”
- Interview present transfer students
- Learn about resources for transfer students from JoAnn Moseman

# Focus of Educational Message

---

- Separate Transfer sessions
- How do we deal with the students who say, “I only want my classes.”
- How does the concept “Engage, Connect and Balance” differ for transfer students compared to freshmen?
- The mail-in process/plans for on-line orientation
- Introduce Transfer Services

# Trends

---

- More Interest in University Housing
- More Parents Attending
- Less Resistance to Formal Programs

# Transfer Student Programs

---

- New Student Welcome Socials
  - August & January
  - College representatives invited
- Web resource for students in transition
  - Information organized by current transfer students
  - Students get link at NSE

# <http://transition.unl.edu>

---

- Getting Around Campus
- Adapting to Lincoln
- Evaluation of Transfer Credit
- Where to Look on the UNL Web
- Opportunities You May Not Have Considered
- Useful Tools and Information
- Scholarship Info for Transfer Students
- Resources for Nontraditional Students

# Transfer Student Programs

---

- Transfer Connection
  - Weekly email by Listserv (text based)
  - Part newsletter, Part continuing orientation, Part personal note
  - Adds context to information
  - Sent to Community College advisers and UNL Colleagues
  - Archived

[http://www.unl.edu/ous/student\\_programs/connection.shtml](http://www.unl.edu/ous/student_programs/connection.shtml)

# Transfer Connection--Topics

---

- Top Ten Reasons to Find A Mentor
- What's in Your Wallet?
- Preparing for Final Exams
- Links to Road/Weather Conditions
- Advising/Priority Registration
- Opportunities & Resources
- Campus & Community Events

# Transfer Student Programs

---

- Information & Referral
- Transfer Course Equivalents
  - Facilitate evaluations & maintain archive
  - Update On-Line Transfer Guides for CC
  - Impact of new Gen Ed Program
- Honor Societies
  - PTK Alumni
  - Tau Sigma

# Transfer Tag Team

---

- Collaboration
  - Communication, internal & external
  - Cooperation
    - How to Transfer Days
    - UNL Transfer Days at SCC-L
    - New Student Enrollment
    - Mid Semester Check
    - Undergraduate Transfer Credit Policy
    - Review of Transfer Credit Procedures
  - Commitment to student success

# Contact Us

---

**Cindy Cammack**

Associate Director for Transfer Programs

Office of Admissions

(402)472-5153

ccammack1@unl.edu

**Patrick McBride**

Director, New Student Enrollment

Office of Admissions

(402)472-8141

pmcbride1@unl.edu

**JoAnn Moseman**

Academic Transfer Coordinator

Office of Undergraduate Studies

(402)472-9455

jmoseman2@unl.edu